

9362-9749 Québec inc.  
en collaboration avec



## **Job 321, Ave St-Louis, Pointe-Claire**

**Lot # 6 269 633 (+/- 8 884 P.C./S.F.)**

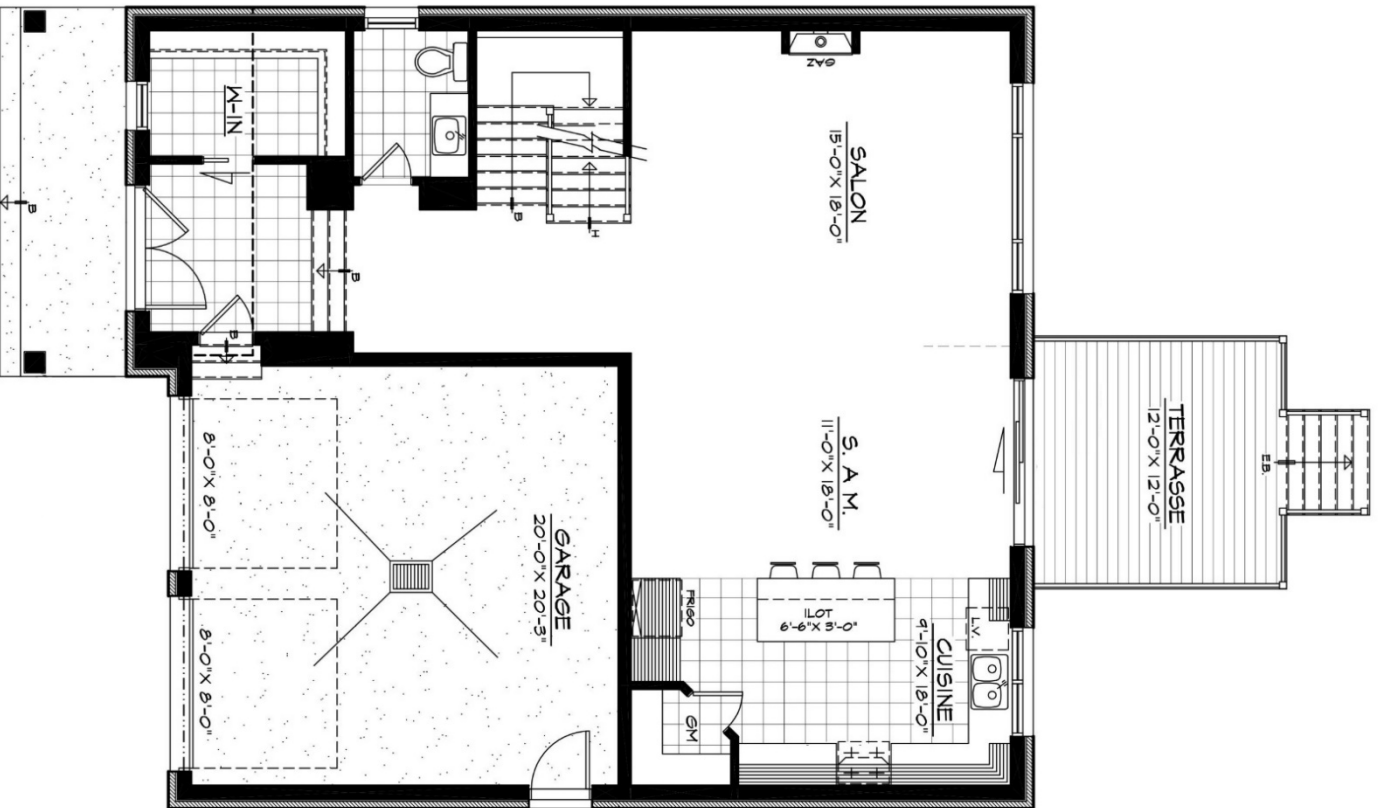
**Superficie habitable/living area (+/- 2 565 P.C./S.F.)  
Garage (+/- 452 P.C./S.F.)**

**1 599 000 \$**

(Terrain, sous-sol fini et taxes incluses /  
Lot, finished basement and taxes included)

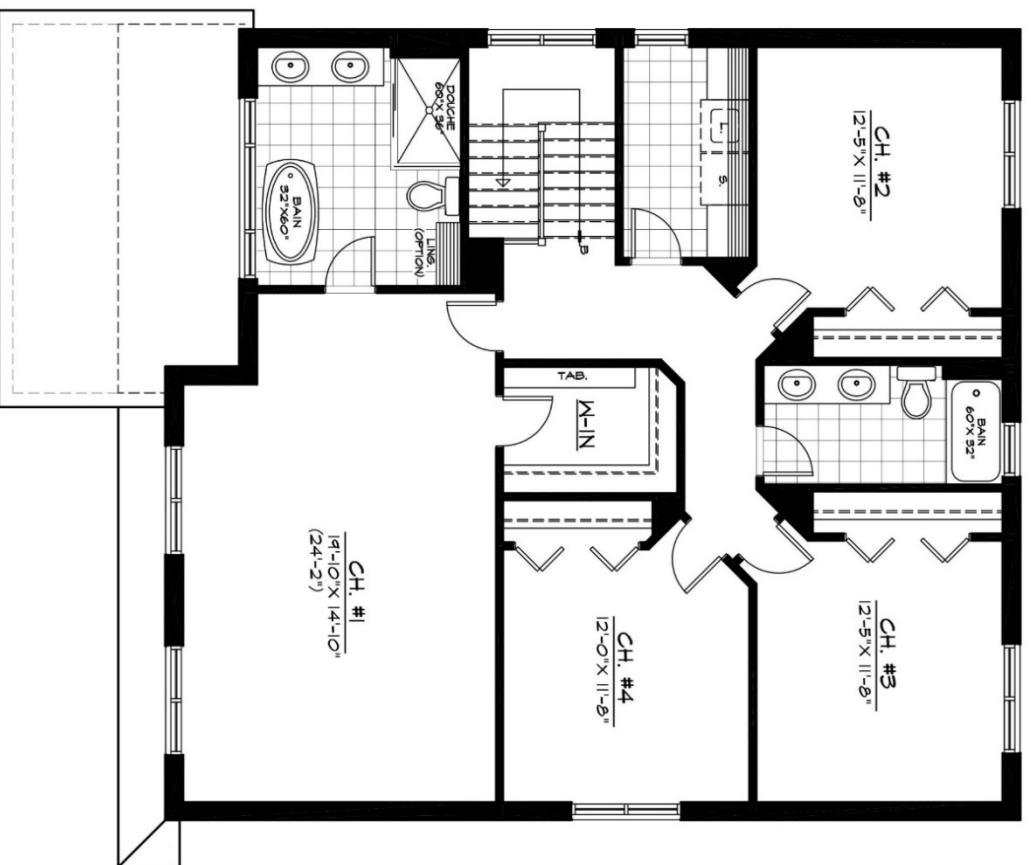
\*Pris sujet à changement sans préavis/Price is subject to change without prior notice

**514-620-6007 #109  
groupehoude.com**



**R-D-C : +/- 1 141 P.C./S.F.**

**GARAGE : +/- 452 P.C./S.F.**



**ÉTAGE : +/- 1 424 P.C./S.F.**