

9377-2416 Québec inc.
en collaboration avec



Job 321, Ave St-Louis, Pointe-Claire

Lot # 6 269 633 (+/- 8 884 P.C./S.F.)

Superficie habitable/living area (+/- 2 565 P.C./S.F.)

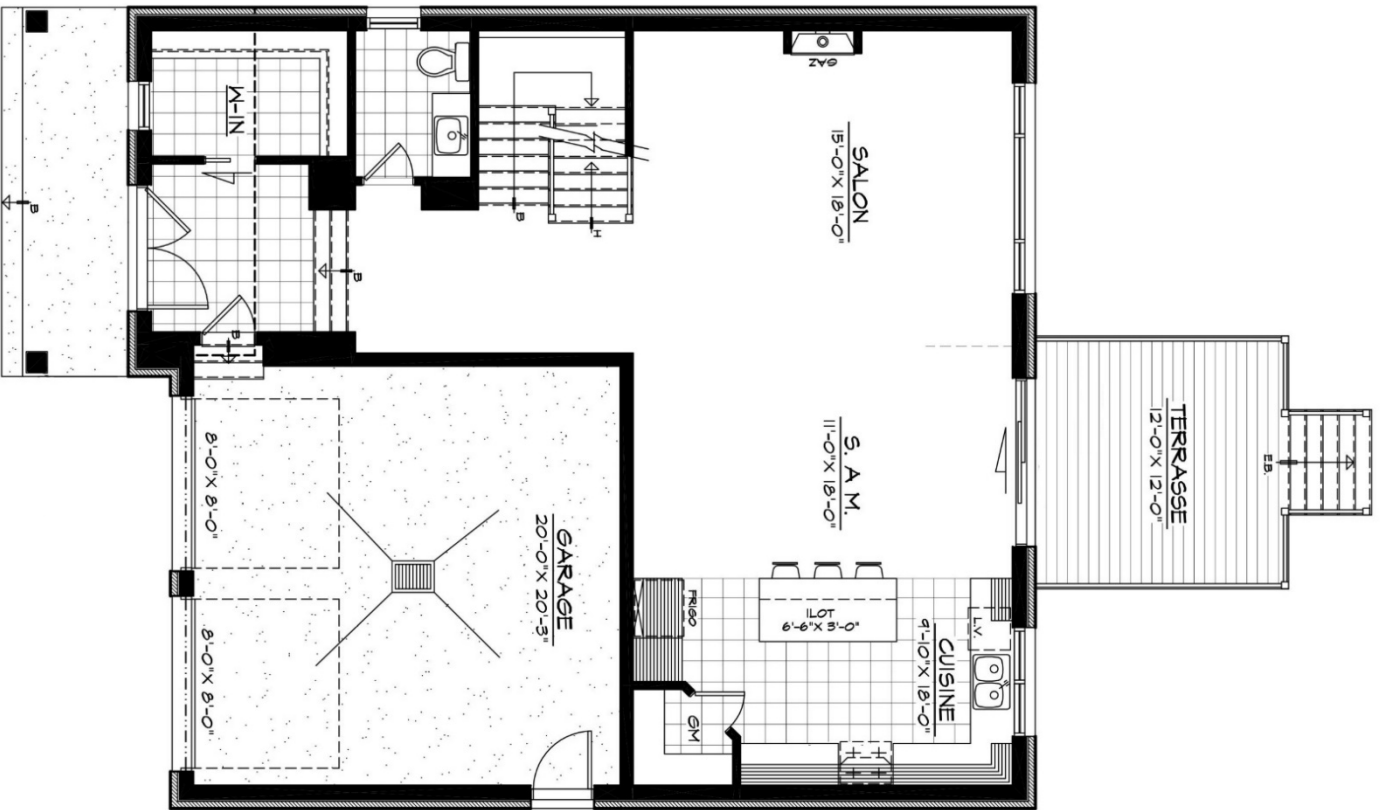
Garage (+/- 452 P.C./S.F.)

1 769 005,35 \$

(Terrain, sous-sol fini et taxes incluses /
Lot, finished basement and taxes included)

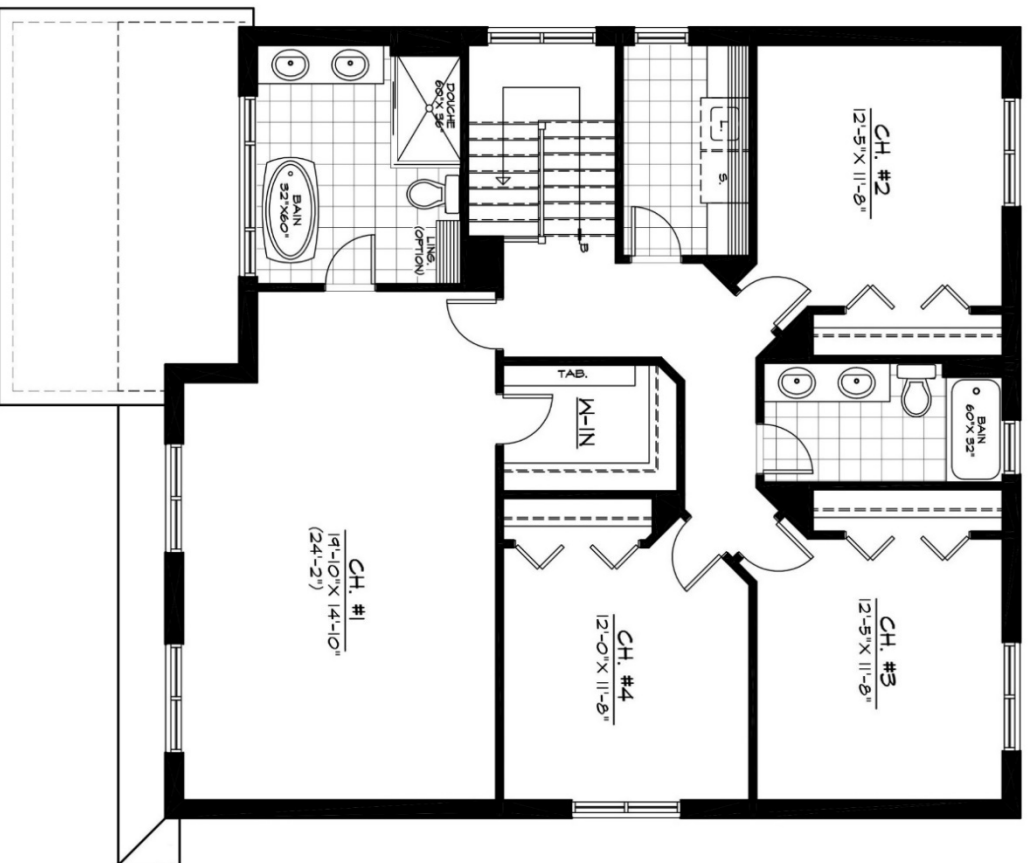
*Pris sujet à changement sans préavis/Price is subject to change without prior notice

Xue Tai (Tom) Zhang
514-758-9699
office.zxt@gmail.com



R-D-C : +/- 1 141 P.C./S.F.

GARAGE : +/- 452 P.C./S.F.



ÉTAGE : +/- 1 424 P.C./S.F.